

Tromba (Sib) 3

FOLLIE DI DONNA

Walzer

Durata circa 19'50"

Grado 4.5

Amilcare Ponchielli (1834 - 1886) Op. 122

Versione per banda sinfonica di Emiliano Gusperti

Andante moderato (♩ = 60) poco rall. Walzer n° 1 (♩ = 200)

14 5 26

1-14 15-19 21-46

47 2 1. 1 2. 1 mf

50-51

55 mf

p

61 mf p

67 1. 2. Walzer n° 2 2 73-74 f

75 2 4 1. 2 2. 2 77-78 81-84 85-86 87-88

89 pp

100 1.

108 2. Walzer n° 3 1 p

114

120 1.

125 2.

5 127-131 *mf*

6 134-139 *mf* 1. 2. *f*

145 Walzer n° 4 7 147-153 *p*

158 *mf*

165 1.

171 2. *pp*

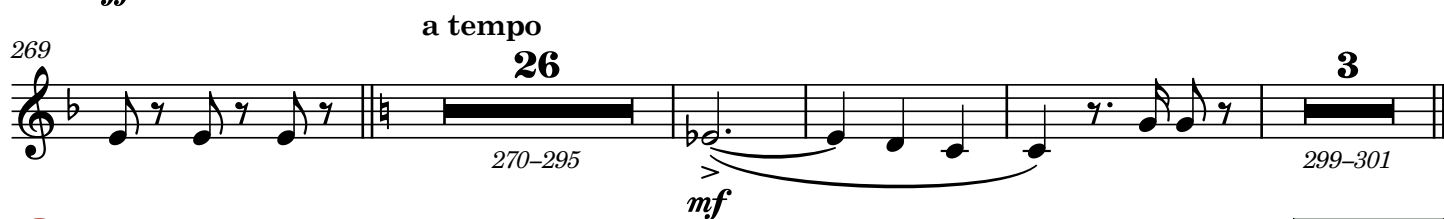
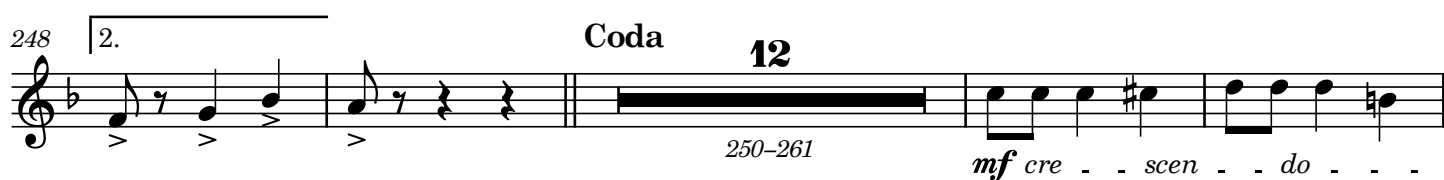
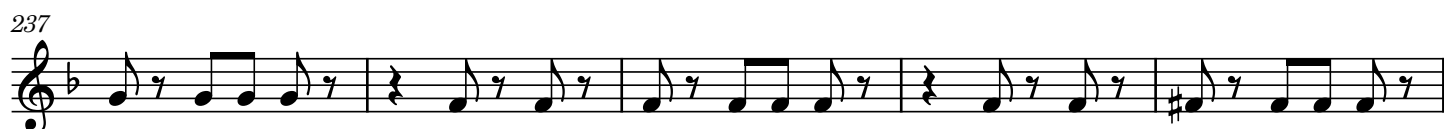
177

183 4 185-188 *pp*

191

196 6 1. 2 2. 2 197-202 203-204 205-206

Walzer n° 5



302 *mf* *p*

308 *mf* *p*

314 Valzer n° 2 *f*

320-321 2 324-325 2 328-333 6 *pp*

336

348 8 352-359 *pp cresc.*

361

367 stringendo *ff*

373

380

386 1 1